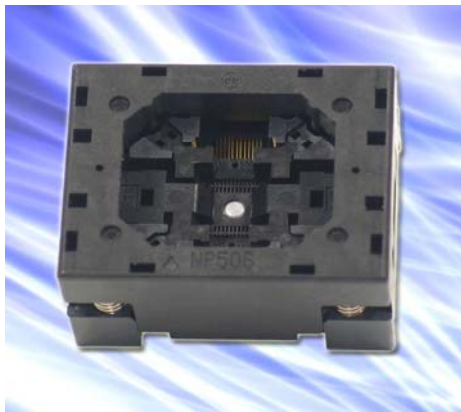




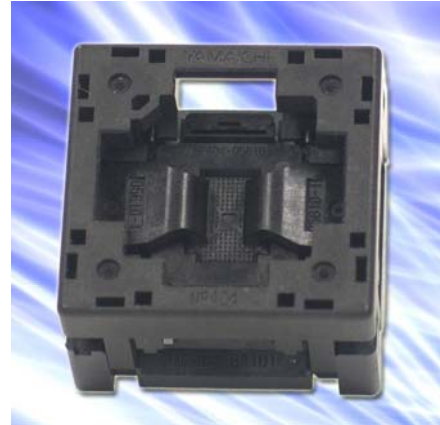
NEW QFN 0.4 & 0.5mm Pitch Test & Burn-in Socket Series

The new open top QFN socket series has a highly-reliable fine pitch (0.4 / 0.5mm) contact system and a standard socket scaling. For automated loading the loader change-kit does not have to be replaced for different package sizes which helps to save changeover times and costs. The standard socket size was designed as a simple buy highly-reliable solution for all required test & burn-in applications. The new QFN series can be implemented without great effort for different Burn-in board IC loader settings.

The highly reliable contact mechanism is achieved by the buckling beam contact concept with a coined contact tip. Zero-insertion force minimizes the IC insertion stress and latch press mechanism ensures a stable contact force. When the push-cover is released, the latch presses onto the surface of the IC which guarantees proper IC seating and necessary contact force contacting the IC pads. The coined tip shape contact ensures a safe and reliable contact of the IC pads creating very low contact resistance.



NP506 (0.4mm pitch) series:
32.1 x 26.7 x 19.5mm. Applica-
ble to 5x5 to 7x7 package sizes
(IC's having 40-56pins)



NP404 (0.5mm pitch) series:
32.0 x 32.0 x 20.5mm. Appli-
cable to even pin counts on
each side (IC's having 16-
88pins)



NP473 (0.5mm pitch) series:
25.0 x 25.0 x 20.5mm. Applica-
ble to odd pin counts on each
side (IC's having 12-44pins)

Available from
BTC Electronic Components
Call for quote.
1-800-526-2828 or 919-556-8900
www.btcelectronics.com

