



Series 800 “Mighty Mouse” with UN Mating Thread Printed Circuit Board Receptacle Ordering Info 800-012-02 and 800-012-07



Series 800 PCB Receptacle

Series 800 Receptacles feature gold-plated straight PCB tails or solder cup contacts. Contacts are non-removable.

Epoxy Sealed to prevent water ingress in “open face” condition.

Two Shell Styles: jam nut with o-ring for rear panel mounting, or square flange.

Integral Standoffs allow clearance for washing.

HOW TO ORDER

Sample Part Number

800-012

-07

M

7-10

P

Z

Series

Shell Style

Shell Material / Finish

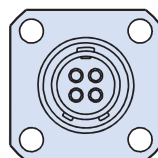
Shell Size- Insert Arrangement

Contact Type

Shell Key Position

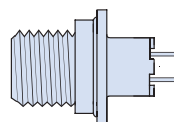
800-012

PCB Receptacle,
Vertical Mount



-02

Square Flange



-07

Jam Nut

C

Aluminum / Black Anodize
(Non-Conductive)
RoHS Compliant

M

Aluminum / Electroless
Nickel
RoHS Compliant

NF

Aluminum / Cadmium with
Olive Drab Chromate

ZN

Aluminum / Zinc-Nickel with
Olive Drab Chromate

UCR

Aluminum / Zinc-Cobalt with
Black Chromate
RoHS Compliant

ZNU

Aluminum / Zinc-Nickel with
Black Chromate

MT

Aluminum / Nickel-PTFE
RoHS Compliant

Z1

Stainless Steel / Passivated
RoHS Compliant

No. of Contacts

Arr.	#23	#20	#16	#12
5-3	3			
6-1			1	
6-4	4			
6-7	7			
7-1				1
7-10	10			
8-2			2	
8-13	13			
8-200	4	2		
9-4			4	
9-19	19			
9-200	4		2	
9-201	8	2		
10-5			5	
10-26	26			
10-200	12			1
10-201	4			2
10-202	8		2	
12-2				2
12-3				3
12-7			7	
12-37	37			
12-200	6			2
12-201	10			2

P

Pin

S

Socket

E

Pin,
Solder Cup

F

Socket,
Solder Cup

N

Normal

X

Pos. X

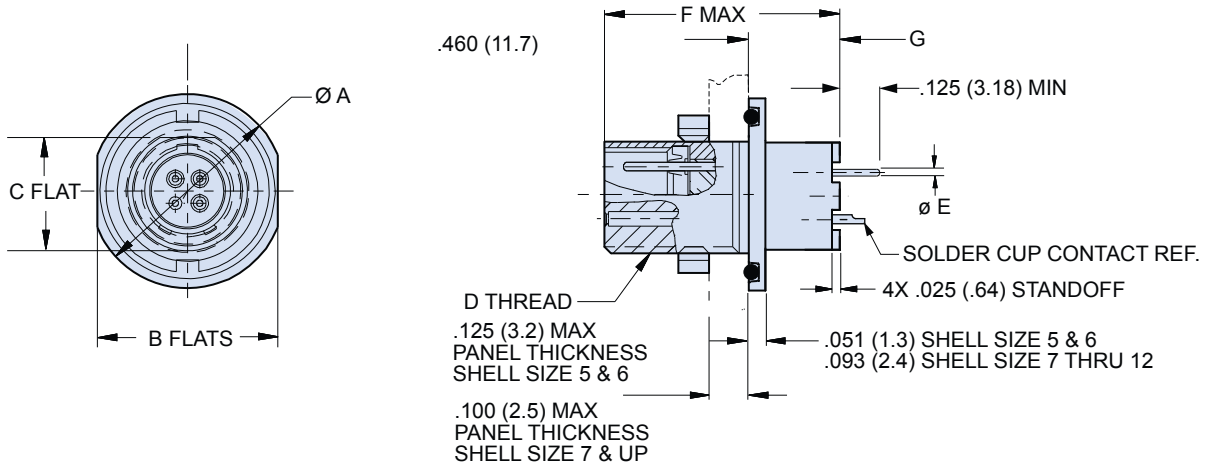
Y

Pos. Y

Z

Pos. Z

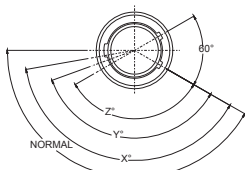
Series 800 "Mighty Mouse" with UN Mating Thread Printed Circuit Board Receptacle Dimensions Jam Nut Receptacle 800-012-07



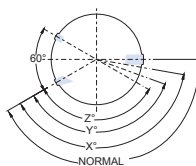
DIMENSIONS

Shell Size	Ø A		Ø B		C		D Threads Mating	Ø E Tail Dia.	F Max		G	
	In.	mm.	In.	mm.	In.	mm.			In.	mm.	In.	mm.
5	.541	13.74	.500	12.70	.285	7.24	.3125-28 UN-2A	#23	.725	18.42	.247	6.27
6	.610	15.49	.562	14.27	.352	8.94	.3750-28 UN-2A		.018/.022 (0.46/0.56)	.725	18.42	.247
7	.670	17.02	.635	16.13	.411	10.44	.4375-28 UNEF-2A	#20	.700	17.78	.205	5.21
8	.775	19.69	.735	18.67	.473	12.01	.5000-32 UN-2A		.024/.028 (0.61/0.71)	.700	17.78	.205
9	.875	22.23	.806	20.47	.530	13.46	.5625-32 UN-2A	#16	.700	17.78	.205	5.21
10	.980	24.89	.940	23.88	.604	15.34	.6250-32 UN-2A		.060/.064 (1.52/1.63)	.700	17.78	.205
12	1.062	26.97	.986	25.04	.712	18.08	.7500-28 UN-2A	#12	.700	17.78	.205	5.21
									.092/.096 (2.34/2.44)	.700	17.78	.205

SERIES 800 KEY POSITIONS



Plug



Receptacle

Key Position

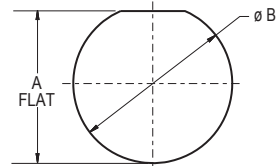
Normal (N)
X
Y
Z

Key Rotation

150°
140°
130°
120°

Shell size 5 and 6: master key is located at top dead center for normal (N) position. Shell size 7 thru 12: master key is rotated 90° from TDC for normal position.

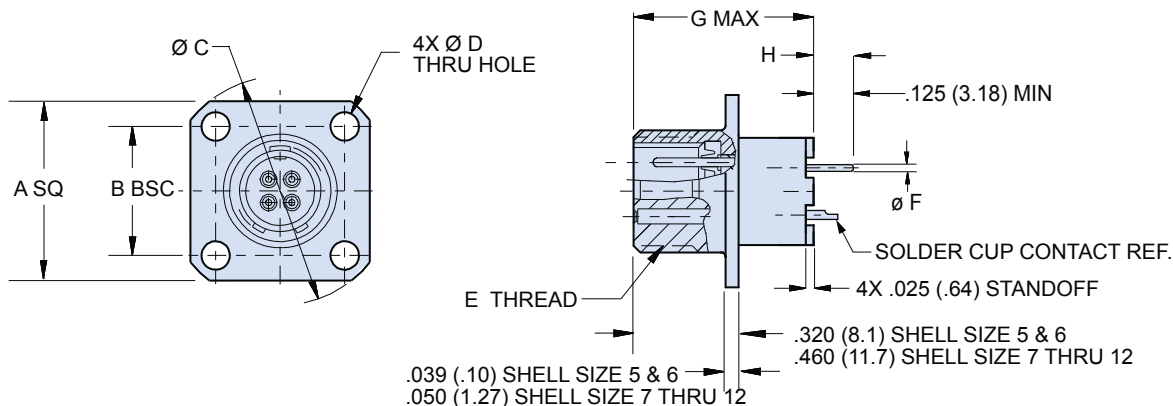
SERIES 800 PANEL CUTOUTS



Shell Size	A Flat		Ø B	
	In.	mm.	In.	mm.
5	.302 / .298	7.67 / 7.57	.318	8.08
6	.365 / .361	9.27 / 9.17	.386	9.80
7	.424 / .420	10.77 / 10.67	.449	11.40
8	.486 / .482	12.34 / 12.24	.510	12.95
9	.543 / .539	13.79 / 13.69	.574	14.58
10	.617 / .613	15.67 / 15.57	.635	16.12
12	.725 / .721	18.42 / 18.31	.760	19.30



Series 800 "Mighty Mouse" with UN Mating Thread Printed Circuit Board Receptacle Dimensions Square Flange Receptacle 800-012-02



DIMENSIONS

Shell Size	A SQ		B		Ø C		Ø D		E Threads Mating	Ø F Tail Dia.	G Max		H	
	In.	mm.	In.	mm.	In.	mm.	In.	mm.			In.	mm.	In.	mm.
5	.527	13.39	.363	9.22	.680	17.27	.094	2.39	.3125-28 UN-2A	#23	.725	18.42	.426	10.82
6	.588	14.92	.423	10.74	.750	19.05	.094	2.39	.3750-28 UN-2A		.018/.022 (0.46/0.56)	.725	18.42	.426
7	.650	16.51	.483	12.27	.830	21.08	.128	3.25	.4375-28 UNEF-2A	#20	.700	17.78	.255	6.48
8	.710	18.03	.542	13.77	.938	23.83	.128	3.25	.5000-32 UN-2A		.024/.028 (0.61/0.71)	.700	17.78	.255
9	.938	23.83	.719	18.26	1.250	31.75	.128	3.25	.5625-32 UN-2A	#16	.700	17.78	.255	6.48
10	.938	23.83	.719	18.26	1.250	31.75	.128	3.25	.6250-32 UN-2A		.060/.064 (1.52/1.63)	.700	17.78	.255
12	1.031	26.19	.812	20.62	1.375	34.93	.128	3.25	.7500-28 UN-2A	#12	.700	17.78	.255	6.48
											.092/.096 (2.34/2.44)	.700	17.78	.255

SERIES 800 KEY POSITIONS

Key Position	Key Rotation		
Normal (N)	150°		
X	140°		
Y	130°		
Z	120°		

Shell size 5 and 6: master key is located at top dead center for normal (N) position. Shell size 7 thru 12: master key is rotated 90° from TDC.