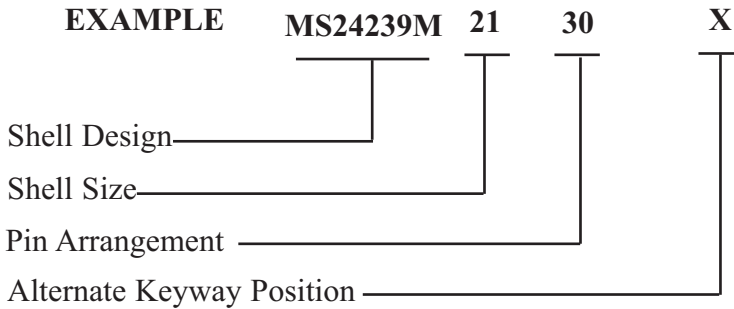


HOW-TO-ORDER



EXAMPLE 8212-21-30PX-SP-B1

8212 Shell design
 21 Shell Size
 30P Pin Arrangement
 X Alternate Keyway Position
 SP Pin Design
 B1 STD Plating- Cadmium per QQ-P-416

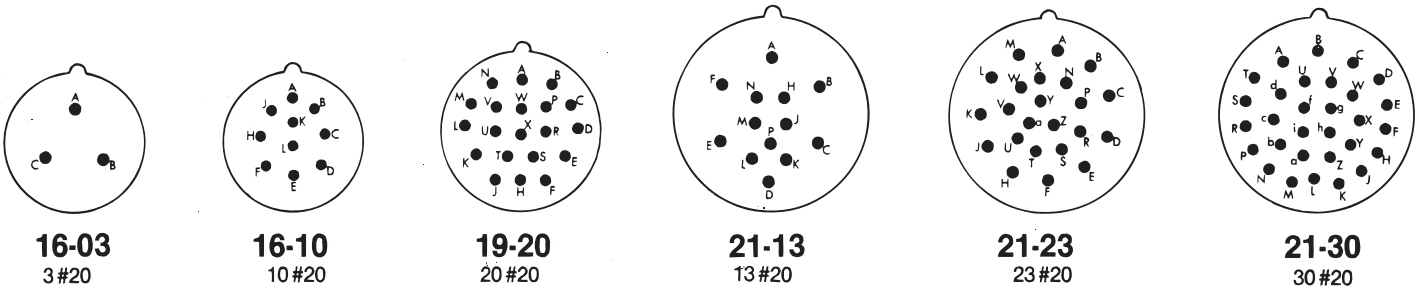
Pin Design:

Solder pot pin design (SP) is standard -
 for flattened and pierced & radiused pin designs
 consult factory

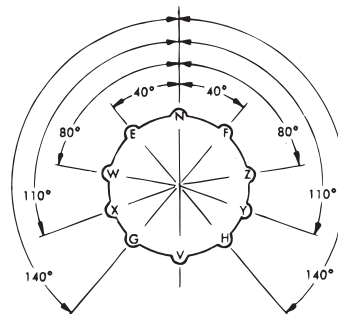
Sealtron's 8200 Series of Hermetically
 Sealed connectors are manufactured in accordance
 with MIL-C-25955 (USAF).

INSERT ARRANGEMENT

(Engaging face of pin insert shown)



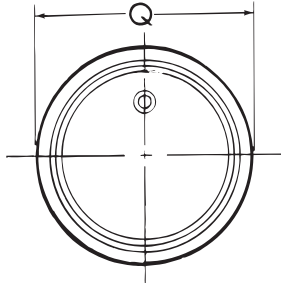
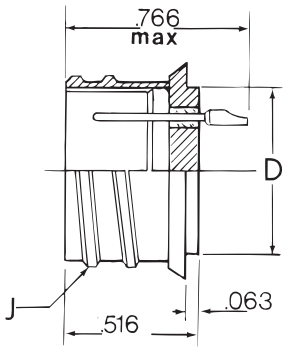
ALTERNATE KEYWAY POSITIONS



(Front of pin inserts shown)

8212 SERIES

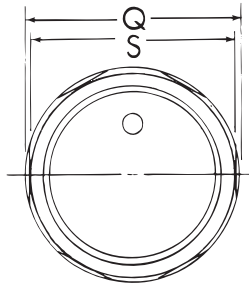
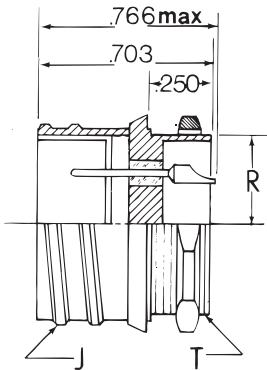
MS24239



Shell Size	J Thread	Q ± .015	D ± .005
16	1.000-6	1.063	.803
19	1.188-6	1.205	.984
21	1.313-6	1.438	1.171

8214 SERIES

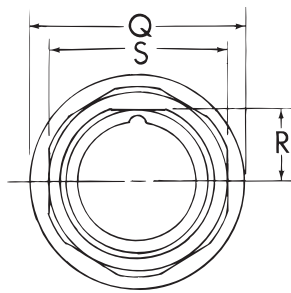
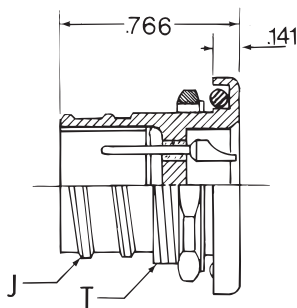
MS24241



Shell Size	J Thread	Q ± .015	R ± .010	S ± .015	T Class 2A
16	1.000-6	1.063	.375	1.000	.875-20 NEF
19	1.188-6	1.205	.478	1.188	1.063-18 NEF
21	1.313-6	1.438	.578	1.375	1.250-18 NEF

8215 SERIES

MS24240



(Mating End)



Shell Size	J Thread	Q ± .015	R ± .010	S ± .015	T Class 2A
16	1.000-6	1.500	.500	1.438	1.125-18 NEF
19	1.188-6	1.688	.594	1.500	1.313-18 NEF
21	1.313-6	1.813	.656	1.625	1.438-18 NEF