



# AS85049/78 EMI/RFI Environmental Backshell

**Glenair Connector  
Designator H**

**MIL-DTL-38999  
Series III & IV,  
EN3645**

**M85049/78-11 W 01**

Basic Part No. \_\_\_\_\_  
Shell Size \_\_\_\_\_  
Clamp Size \_\_\_\_\_  
Finish \_\_\_\_\_

N = Electroless Nickel  
W = 1,000 Hr. Cadmium Olive  
Drab Over Electroless Nickel

TABLE I		
Shell Size	A Thread Class 2B	B Dia Max
9	M12 X 1 - 6H	.75 (19.1)
11	M15 X 1 - 6H	.85 (21.6)
13	M18 X 1 - 6H	1.00 (25.4)
15	M22 X 1 - 6H	1.15 (29.2)
17	M25 X 1 - 6H	1.25 (31.8)
19	M28 X 1 - 6H	1.40 (35.6)
21	M31 X 1 - 6H	1.55 (39.4)
23	M34 X 1 - 6H	1.65 (41.9)
25	M37 X 1 - 6H	1.85 (47.0)

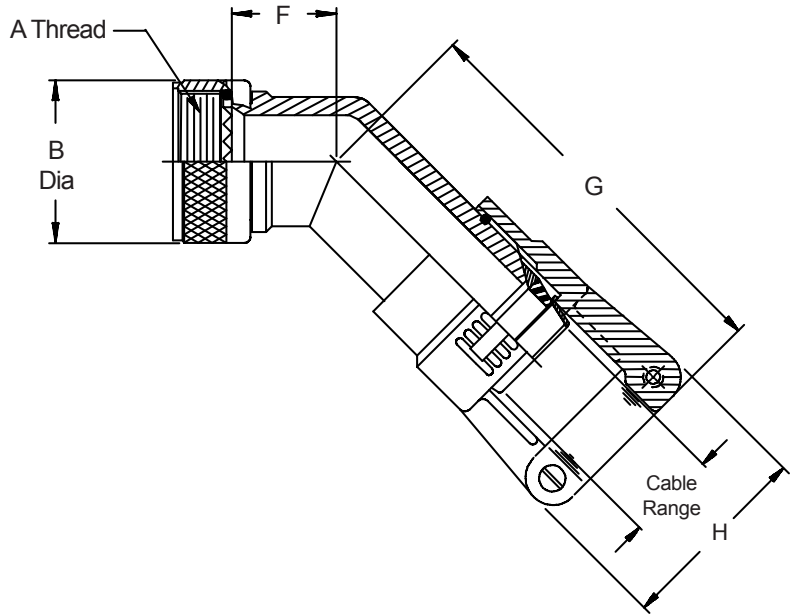


TABLE II					
Shell Size	Clamp Size		F		G
	Min	Max	±.062	(1.6)	±.062 (1.6)
09	01	02	.398	(10.1)	3.088 (78.4)
11	01	03	.458	(11.6)	3.148 (80.0)
13	02	04	.518	(13.2)	3.208 (81.5)
15	02	05	.588	(14.9)	3.298 (83.8)
17	02	06	.678	(17.2)	3.408 (86.6)
19	03	07	.868	(22.0)	3.598 (91.4)
21	03	08	.868	(22.0)	3.598 (91.4)
23	03	09	.958	(24.3)	3.748 (95.2)
25	04	10	.958	(24.3)	3.748 (95.2)

TABLE III					
Clamp Size	Cable Range		H		
	Min	Max	Min	Max	
01	.062	(1.6)	.125	(3.2)	.80 (20.3)
02	.125	(3.2)	.250	(6.4)	1.00 (25.4)
03	.250	(6.4)	.375	(9.5)	1.10 (27.9)
04	.375	(9.5)	.500	(12.7)	1.20 (30.5)
05	.500	(12.7)	.625	(15.9)	1.25 (31.8)
06	.625	(15.9)	.750	(19.1)	1.40 (35.6)
07	.750	(19.1)	.875	(22.2)	1.50 (38.1)
08	.875	(22.2)	1.000	(25.4)	1.65 (41.9)
09	1.000	(25.4)	1.125	(28.6)	1.75 (44.5)
10	1.125	(28.6)	1.250	(31.8)	1.90 (48.3)

1. For complete dimensions see applicable Military Specification.
2. Metric dimensions (mm) are indicated in parentheses.
3. Cable range is defined as the accommodation range for the wire bundle or cable. Dimensions shown are not intended for inspection criteria.