



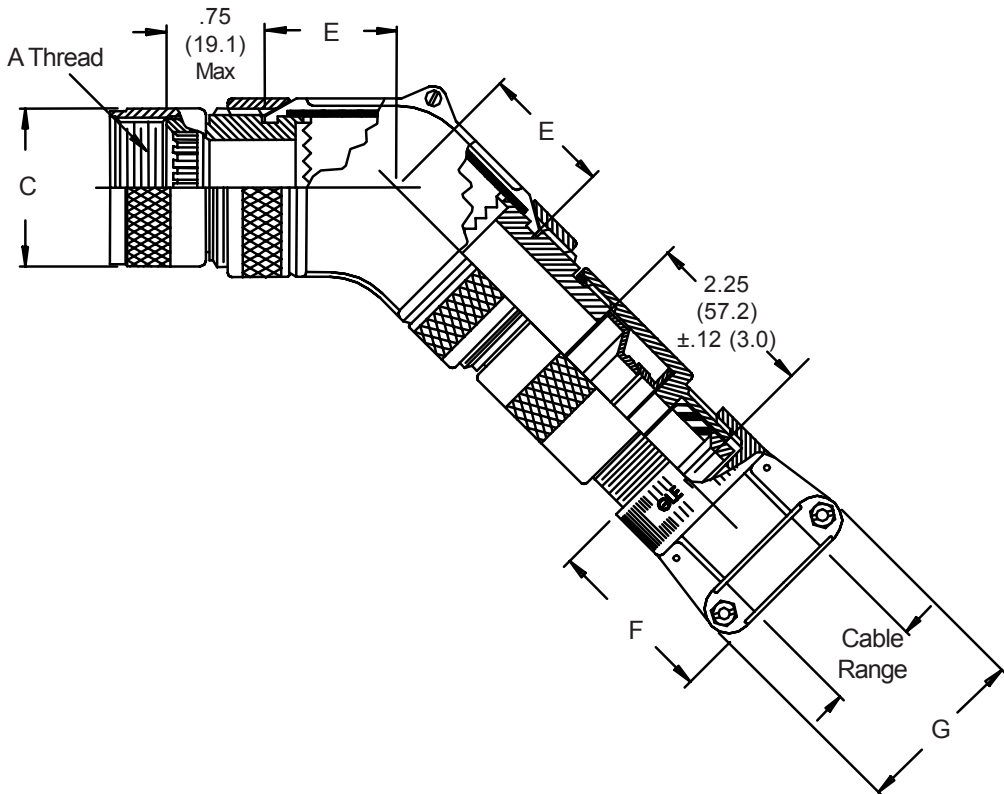
M28840/9 A EMI/RFI Environmental Backshell

Glenair Connector
Designator G

MIL-C-28840

M28840/9 16 W A

Basic Part No. _____
Dash No. (Table II) _____
Style Designator - A = EMI/Environmental
Material and Finish Designator
D = Corrosion Resistant Steel,
Cadmium Plate, Black
W = Aluminum, Cadmium Olive
Drab over Electroless Nickel



1. For complete dimensions see applicable Military Specification.
2. Metric dimensions (mm) are indicated in parentheses.
3. Cable range is defined as the accommodations range for the wire bundle or cable. Dimensions shown are not intended for inspection criteria.

M28840/9 A EMI/RFI Environmental Backshell



EMI/RFI
Environmental
Backshells

TABLE I

Shell Size	A Thread Class 2B	C Dia Max
11	.750 - 20 UNEF	1.028 (26.1)
13	.875 - 20 UNEF	1.141 (29.0)
15	1.000 - 20 UNEF	1.263 (32.1)
17	1.125 - 18 UNEF	1.387 (35.2)
19	1.250 - 18 UNEF	1.513 (38.4)
23	1.438 - 18 UNEF	1.703 (43.3)
25	1.562 - 18 UNEF	1.825 (46.4)
29	1.875 - 16 UN	2.143 (54.4)
33	2.062 - 16 UNS	2.329 (59.2)

TABLE II

Dash No.	Shell Size	E Ref.	E Max	F Ref. Dim	G Ref. Dim	Cable Range			
						Min	Max	Min	Max
01	11	1.031	(26.2)	1.281 (32.5)	.938 (23.8)	.188 (4.8)	.312 (7.9)	.188 (4.8)	.312 (7.9)
02	13	1.031	(26.2)	1.281 (32.5)	.938 (23.8)	.188 (4.8)	.312 (7.9)	.188 (4.8)	.312 (7.9)
03	13	1.031	(26.2)	1.281 (32.5)	1.125 (28.6)	.281 (7.1)	.438 (11.1)	.281 (7.1)	.438 (11.1)
04	15	1.156	(29.4)	1.281 (32.5)	.938 (23.8)	.188 (4.8)	.312 (7.9)	.188 (4.8)	.312 (7.9)
05	15	1.156	(29.4)	1.281 (32.5)	1.125 (28.6)	.281 (7.1)	.438 (11.1)	.281 (7.1)	.438 (11.1)
06	15	1.156	(29.4)	1.281 (32.5)	1.312 (33.3)	.344 (8.7)	.562 (14.3)	.344 (8.7)	.562 (14.3)
07	15	1.281	(32.5)	1.312 (33.3)	1.593 (40.5)	.438 (11.1)	.750 (19.1)	.438 (11.1)	.750 (19.1)
08	17	1.281	(32.5)	1.281 (32.5)	1.312 (33.3)	.375 (9.5)	.625 (15.9)	.375 (9.5)	.625 (15.9)
09	17	1.281	(32.5)	1.312 (33.3)	1.593 (40.5)	.438 (11.1)	.750 (19.1)	.438 (11.1)	.750 (19.1)
10	17	1.281	(32.5)	1.406 (35.7)	1.750 (44.5)	.625 (15.9)	.938 (23.8)	.625 (15.9)	.938 (23.8)
11	19	1.281	(32.5)	1.281 (32.5)	1.312 (33.3)	.375 (9.5)	.625 (15.9)	.375 (9.5)	.625 (15.9)
12	19	1.406	(35.7)	1.406 (35.7)	1.750 (44.5)	.625 (15.9)	.938 (23.8)	.625 (15.9)	.938 (23.8)
13	23	1.406	(35.7)	1.312 (33.3)	1.593 (40.5)	.438 (11.1)	.750 (19.1)	.438 (11.1)	.750 (19.1)
14	23	1.406	(35.7)	1.406 (35.7)	1.750 (44.5)	.625 (15.9)	.938 (23.8)	.625 (15.9)	.938 (23.8)
15	23	1.406	(35.7)	1.593 (40.5)	2.093 (53.2)	.812 (20.6)	1.188 (30.2)	.812 (20.6)	1.188 (30.2)
16	25	1.406	(35.7)	1.406 (35.7)	1.750 (44.5)	.625 (15.9)	.938 (23.8)	.625 (15.9)	.938 (23.8)
17	25	1.406	(35.7)	1.593 (40.5)	2.093 (53.2)	.812 (20.6)	1.188 (30.2)	.812 (20.6)	1.188 (30.2)
18	25	1.531	(38.9)	1.593 (40.5)	2.093 (53.2)	.875 (22.2)	1.250 (31.8)	.875 (22.2)	1.250 (31.8)
19	25	1.531	(38.9)	1.625 (41.3)	2.343 (59.5)	1.000 (25.4)	1.380 (35.1)	1.000 (25.4)	1.380 (35.1)
20	29	1.531	(38.9)	1.593 (40.5)	2.093 (53.2)	.812 (20.6)	1.188 (30.2)	.812 (20.6)	1.188 (30.2)
21	29	1.531	(38.9)	1.625 (41.3)	2.343 (59.5)	1.000 (25.4)	1.380 (35.1)	1.000 (25.4)	1.380 (35.1)
22	33	1.781	(45.2)	1.625 (41.3)	2.343 (59.5)	1.000 (25.4)	1.380 (35.1)	1.000 (25.4)	1.380 (35.1)
23	33	1.781	(45.2)	1.900 (48.3)	2.750 (69.9)	1.250 (31.8)	1.625 (41.3)	1.250 (31.8)	1.625 (41.3)
24	11	1.031	(26.2)	1.281 (32.5)	1.125 (28.6)	.281 (7.1)	.438 (11.1)	.281 (7.1)	.438 (11.1)
25	11	1.156	(29.4)	1.281 (32.5)	1.312 (33.3)	.344 (8.7)	.562 (14.3)	.344 (8.7)	.562 (14.3)
26	13	1.156	(29.4)	1.281 (32.5)	1.312 (33.3)	.344 (8.7)	.562 (14.3)	.344 (8.7)	.562 (14.3)
27	13	1.281	(32.5)	1.281 (32.5)	1.312 (33.3)	.375 (9.5)	.625 (15.9)	.375 (9.5)	.625 (15.9)
28	15	1.281	(32.5)	1.281 (32.5)	1.312 (33.3)	.375 (9.5)	.625 (15.9)	.375 (9.5)	.625 (15.9)