



QMA Series Subminiature RF Connectors

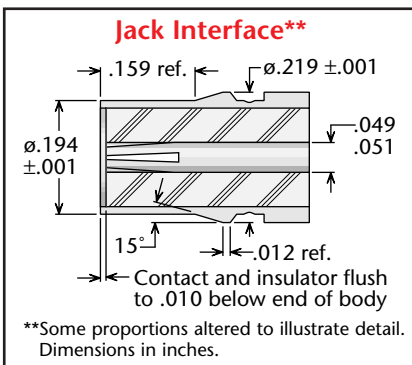
General Description

Delta QMA jacks are connectors with size and performance similar to SMA connectors, but with a snap-on interface for quick mating and unmating, and brass body construction for economy. Designed to mate with all QMA plugs, they offer good electrical performance up to 6 GHz.

The PressMount mounting configuration (see below) allows QMA receptacles to be mounted securely in a single through hole, with center-to-center spacing as little as .325 inch.

New types are being added to our product line, so please call with your requirements for other QMA configurations.

QMA Jack Specifications*



Electrical:

Nominal Impedance: 50 ohms.
Frequency Range: DC–6 GHz.
Voltage Rating: 335 volts RMS (dependent on cable).
Dielectric Withstanding Voltage: 1,000 volts RMS.
Insulation Resistance: 5,000 megohms.
VSWR: DC–3 GHz: 1.06:1 max; 3–6 GHz: 1.12:1 max.

Mechanical:

Durability: 100 mating cycles.
Force to Engage: 26 N.
Force to Disengage: 20 N.

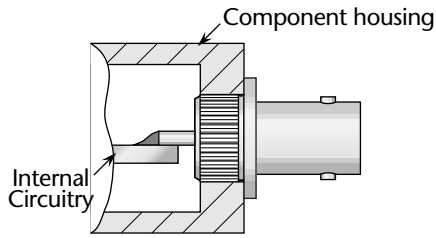
Materials/Finishes:

Insulators: Teflon per ASTM D1710.
Female Contacts: Beryllium Copper per ASTM B196.
Contact Plating: Gold per MIL-G-45204.
Gaskets: Silicone rubber per ZZ-R-765, Class II, Grade 50.
Other Metal Parts: Brass per ASTM B16, gold plated per MIL-G-45204.

*These specifications are typical and may not apply to all connectors. Detailed specifications for individual connectors are available on request.

QMA PressMount Receptacle—Post Contact

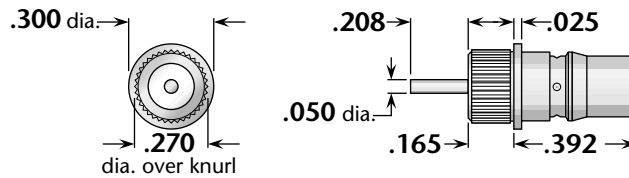
Delta PressMount Receptacles



These connectors eliminate the need for complicated mounting hole patterns and mounting hardware.

They are simply pressed into a single through hole, and the precisely-engineered knurled mounting section provides retention strength far greater than normal mating and unmating forces. An integral shoulder provides a positive stop when mounting.

PressMountreceptacles can be used in packages as small as the outer diameter of the connector body.



Minimum Panel Thickness	Mounting Hole Diameter	Plating		Delta P/N
		Body	Contact	
.100	.267 ±.001	Gold*	Gold (C)	4220-000-G911

Panel Jack Receptacles

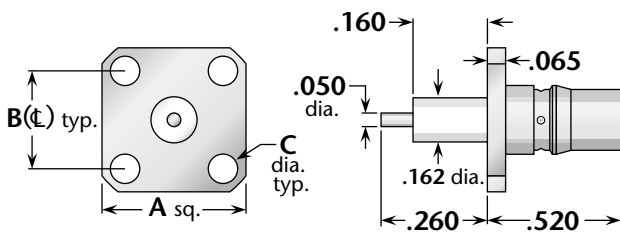


Figure 1 (Square flange)

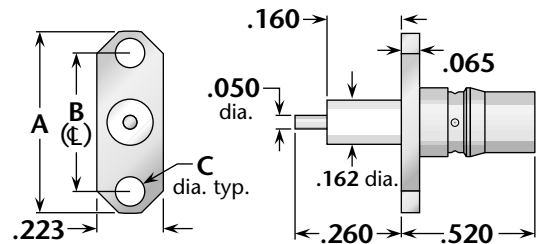


Figure 2 (Two-hole flange)

Figure	Dimensions			Mounting Figure	Plating		Delta P/N
	A	B	C		Body	Contact	
1	.500	.340	.102	05	Gold*	Gold (C)	4258-000-G051-9
2	.625	.481	.102	92	Gold*	Gold (C)	4258-000-G921-6

* Also available with Albaloy-plated body—change G in Delta part number to Q.
(C) in contact plating column indicates captive contact.